

Pre-routing Estimation of Shielding for RLC Signal Integrity*

James D. Z. Ma, Arvind Parihar, and Lei He
ECE Department, University of Wisconsin, Madison, WI 53706

Abstract

The formula-based K_{eff} model is a figure of merit for the inductive coupling, and has been used to solve the simultaneous shield insertion and net ordering (SINO) and simultaneous signal and power routing (SPR) problems. In this paper, we first show that the K_{eff} model has a high fidelity compared to the SPICE-computed noise under an accurate RLC circuit model. We then develop simple yet accurate formulae to estimate numbers of shields needed by optimal SINO solutions under the K_{eff} model. Extensive experiments show that our pre-routing estimation has errors less than 10% compared to solutions given by detailed SINO algorithms. These formulae can be used effectively as a pre-routing congestion estimation for layout planning and synthesis.

1. Introduction

It is becoming increasingly evident that on-chip inductance, especially mutual inductance, should be considered for high-performance interconnect design. Several recent work have studied interconnect optimization considering inductive coupling for multiple coupled nets. Examples include the simultaneous shield insertion and net ordering (SINO) problem [4] and simultaneous signal and power routing (SPR) problem [6].

The K_{eff} model but not noise voltage is used in [4, 6] to represent the inductive coupling. Despite that the K_{eff} model is far away from accurate, our first contribution in this paper is to show that for optimal SINO solutions, the K_{eff} model has a high fidelity compared to SPICE-computed noise under an accurate RLC circuit model. I.e., a SINO solution with a higher coupling under the K_{eff} model also has a higher noise voltage.

To integrate the SINO problem into the current design flow, it is desired to have an efficient interconnect congestion estimation. Our second contribution of this paper is to develop simple yet accurate formulae to estimate numbers

of shields needed by optimal SINO solutions without running SINO algorithms.

The rest of this paper is organized as follows: Section 2 introduces preliminaries and reviews the related research. Section 3 studies the fidelity of the K_{eff} model. Section 4 derives formulae for the pre-routing congestion estimation. Section 5 concludes the paper and discusses ongoing work.

2. Preliminaries and related work

Similar to [4], we denote a signal net as *s-wire* and define that two nets s_1 and s_2 are *sensitive* to each other if a switching signal on s_1 causes s_2 to malfunction (due to extraordinary crosstalk or delay variation) and vice-versa. In this case, s_1 is an *aggressor* for s_2 , and s_2 a *victim* of s_1 . The *sensitivity rate* of s_i is defined as the ratio of the number of aggressors for s_i to the total number of nets. A *shield* is a wire directly connected to P/G wires. By inserting a shield between two sensitive s-wires, we are able to eliminate the capacitive coupling and reduce the inductive coupling.

In order to efficiently model inductive coupling between two arbitrary s-wires, the inductive coupling coefficient between two s-wires can be used as the figure of merit. The coupling coefficient between two nets s_i and s_j is defined as

$$K_{ij} = \frac{m_{ij}}{\sqrt{l_i \cdot l_j}}$$

where m_{ij} is the mutual inductance between s_i and s_j , and l_i and l_j is self inductance for s_i and s_j , respectively. Let a *block* denote the set of wires between two shields. In this “effective coupling model” (i.e., K_{eff} model), when the two nets are in the same block, as shown in Figure 1 where N_i and N_j are track ordering numbers for the two s-wires, and g_l and g_r are track ordering numbers for the two shields, the coupling coefficient is computed as

$$K_{i,j} = \frac{(f(i) + g(j))}{2}$$

where $f(i)$ and $g(j)$ are two functions defined as follows: assuming that the function f is 0 at g_l , and is 1 at N_j , $f(i)$ is the linear interpolation, i.e., $f(i) = \frac{(N_i - g_l)}{(N_j - g_l)}$. Similarly,

*This research was partially supported by NSF CAREER Award CCR-0093273 and a grant from Intel. Address comments to he@ece.wisc.edu.

$g(j) = \frac{(g_r - N_i)}{(g_r - N_j)}$. When nets i and j are in different blocks, the coupling coefficient K_i is 0 or a small constant. We compute the total inductive coupling for s_i as:

$$K_i = \sum_{j \neq i} K_{ij}$$

for each s-wire s_j that is sensitive to s_i .

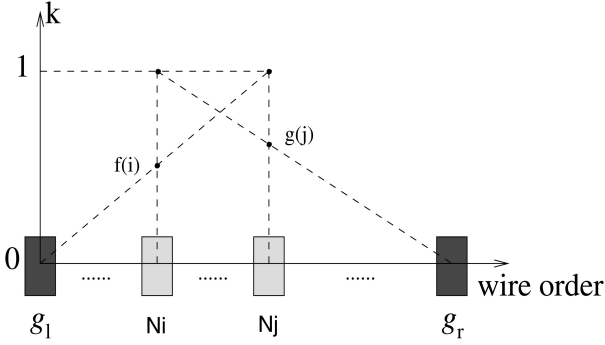


Figure 1. Illustration of K_{eff} computation.

The K_{eff} model has been applied to SINO and SPR problems [4, 6]. The SINO problem performs simultaneous shield insertion and net ordering. The SPR problem defines an optimal P/G structure such that the minimal number of shields is needed by the optimal SINO solution with respect to the above P/G structure. Both problems minimize the *total* routing area. Further, resulting solutions are free of capacitive coupling and satisfy inductive coupling constraint under the K_{eff} model.

3. Fidelity of K_{eff} model

The K_{eff} model is easy to compute and convenient to use at a higher design level or at an earlier design stage. However, it is not clear how good the K_{eff} model is as a figure of merit for the accurate noise voltage. Especially, it assumes that the current returns from the nearest shield, which may not be true in general. The current often returns from quiet wires within the current block if there are plenty of quiet wires in this block. On the other hand, the current often returns from shields or quiet wires outside the current block when multiple wires in the current block switch simultaneously. Despite that the K_{eff} model is far away from accurate, it has a high fidelity in the following sense: an optimal SINO solution with a higher coupling value K_i also has a higher SPICE-computed noise over a distributed RLC circuit model using the partial inductance model. Our observation is based on the following experiment. We first generate a large number of optimal SINO solutions using

SINO algorithms, and rank these solutions by both the coupling value K_i and SPICE-computed noise using an accurate RLC circuit model. We then compute the absolute difference between the two rankings for each optimal SINO solution. If the ranking difference is small enough, the K_{eff} model has a high fidelity. The similar ranking techniques have been used to study the fidelity of Elmore delay model in [1, 2].

Further, we calculate the SPICE-computed noise difference with respect to the average ranking difference in the following way: let the average ranking difference be d . For a SINO solution whose SPICE-computed noise ranking is i , we compute the relative difference between the $(i+d)$ -th and i -th SPICE-computed noise, as well as that between the $(i-d)$ -th and i -th SPICE-computed noise. Between the two values, the one with the larger absolute value divided by the i -th SPICE-computed noise value is defined as *noise difference* for the solution. In other words, it shows how much the noise difference is introduced if we use K_{eff} model to approximate the SPICE-computed noise voltage under an accurate RLC circuit model.

technology	0.10 μ m
Vdd	1.05V
frequency	3GHz
input rising time	33ps
driver resistance	150 Ω
load capacitance	60fF
wire width	1.0 μ m
wire thickness	1.1 μ m
wire spacing	0.8 μ m
wire length	2000 μ m
K_{th}	0.5, 1.0, 1.5, 2.0

Table 1. Experiment settings for SPICE simulation

In our SPICE simulation, we generate a RLC segment for each 100 μ m wire segment, and a mutual inductance between any pair of two segments even though they belong to the same wire. We use the partial inductance model in [8, 3], without assuming any current return path. The parameters for the SPICE simulation of the detailed RLC circuit model are summarized in Table 1. We report in Figure 2 the distribution of the ranking differences for SINO solutions. The average ranking difference is only 124.533 over 3,840 SINO solutions. The average noise difference with respect to such a ranking difference is 6.2018%. In addition, we present in Table 2 the average noise difference for SINO solutions with different coupling values. One can easily see that the smaller the coupling, the smaller the average noise difference. We assume in our experiment that the largest

coupling value is 2.0 under the K_{eff} model. This value is chosen based on our experiments [4] that for $0.10\mu m$ technology, $K_{th} = 2.0$ is a “good” noise bound in the sense that the resulting SINO solutions have the SPICE-computed maximum noise close to but still less than 15% of Vdd.

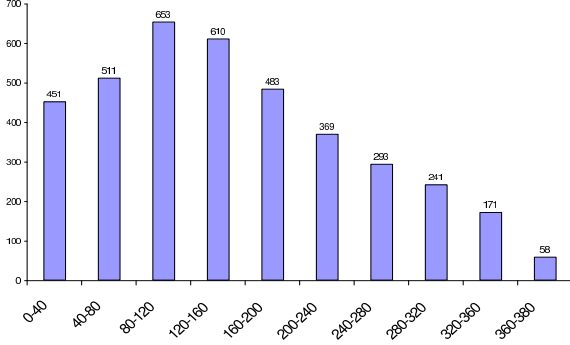


Figure 2. The distribution of the ranking difference for 3,840 SINO solutions.

coupling value	noise difference
$0 < K_i < 0.5$	5.1193%
$0.5 < K_i < 1.0$	5.9872%
$1.0 < K_i < 1.5$	6.5520%
$1.5 < K_i < 2.0$	7.1487%

Table 2. The average noise difference for different coupling values

Based on the above empirical evidence, we conclude that the K_{eff} model has a high fidelity over SPICE-computed noise using an accurate circuit model. This fidelity holds for optimal SINO solutions under practical noise bound. We speculate that the SINO algorithms are able to distribute shields and quite wires evenly both spatially and temporally, therefore the current mainly returns within the current block including the nearest shields. This leads to the fidelity of the K_{eff} model.

4. Formulae of pre-routing estimation

We first consider the uniform sensitivity case, where each net has the same sensitivity rate S . Further, We denote the number of shields as N_s , the number of nets as N , and the coupling coefficient threshold as K_{th} . As shown in [6], the number of shields for a fixed K_{th} is

$$N_s = (a_1 \cdot N + a_2) \cdot S^2 + (a_3 \cdot N + a_4) \cdot S + a_5 \cdot N + a_6 \quad (1)$$

where a_1 to a_6 are coefficients determined empirically. However, the above formula did not consider K_{th} as a variable, which limits its application.

We propose that the number of shields is a function of N , S , and K_{th} as

$$N_s = -0.448 \cdot K_{th} \cdot N \cdot S^2 + 0.624 \cdot N \cdot S^2 + 21.67 \cdot K_{th} \cdot S^2 - 29.87 \cdot S^2 + 0.384 \cdot K_{th} \cdot N \cdot S - 0.337 \cdot N \cdot S - 22.83 \cdot K_{th} \cdot S + 31.45 \cdot S - 0.12 \cdot K_{th} \cdot N + 0.202 \cdot N + 5.47 \cdot K_{th} - 6.28 \quad (2)$$

This formula shows that given fixed values of N and S , N_s is a linear function of K_{th} .

Formula (2) can be extended to the case with non-uniform sensitivity rates. When the sensitivity rate is not uniform but is S_i for s-wire s_i , the number of shields is given by

$$N_s = -0.448 \cdot K_{th} \cdot \sum_{i=1}^N S_i^2 + 0.624 \cdot \sum_{i=1}^N S_i^2 + 21.67 \cdot \frac{K_{th}}{N} \cdot \sum_{i=1}^N S_i^2 - 29.87 \cdot \frac{1}{N} \cdot \sum_{i=1}^N S_i^2 + 0.384 \cdot K_{th} \cdot \sum_{i=1}^N S_i - 0.337 \cdot \sum_{i=1}^N S_i - 22.83 \cdot \frac{K_{th}}{N} \cdot \sum_{i=1}^N S_i + 31.45 \cdot \frac{1}{N} \cdot \sum_{i=1}^N S_i - 0.12 \cdot K_{th} \cdot N + 0.202 \cdot N + 5.47 \cdot K_{th} - 6.28 \quad (3)$$

We verify formulae (2) and (3) by comparing numbers of shields given by the formulae and those obtained by the SINO program. As shown in Figure 3, the difference between the estimation and the SINO program is less than 10%. Note that we can tune the constant in formulae (2) and (3) to obtain a desired lower or upper bound on the number of shields required by SINO solutions.

5. Conclusion and discussion

In this paper, we have shown that the K_{eff} model has a high fidelity to SPICE-computed noise under an accurate RLC circuit model. We have developed simple yet accurate formulae to estimate the number of shields needed by optimal SINO solutions under the K_{eff} model. Extensive experiments show that our pre-routing estimation has errors less than 10% compared to solutions given by detailed SINO algorithms. Such estimation can be used by interconnect planning and synthesis. For example, shielding estimation has been used to develop an efficient two-phase algorithm for the SPR problem [6]. Further, we have recently

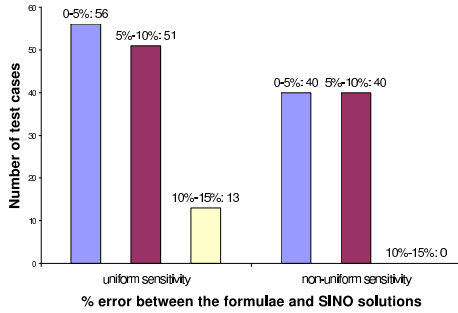


Figure 3. Comparison of N_s by the estimation and the SINO- k program.

developed shielding estimation for SINO solutions under an explicit RLC noise constraint [5, 7].

The simplest interconnect structure, parallel bus structure, is assumed in this work. We are incorporating the pre-routing estimation and SPR formulation to a global router for signal and power net co-design. Even though the explicit RLC noise model used in [5, 7] is more accurate, we plan to first apply the K_{eff} model to the global router due to the simplicity and high fidelity of the K_{eff} model. These new results will be made available at <http://eda.ece.wisc.edu>.

References

- [1] K. D. Boese, A. B. Kahng, and G. Robins. High-performance routing trees with identified critical sinks. In *Proc. Design Automation Conf*, pages 182–187, 1993.
- [2] J. Cong and L. He. Optimal wiresizing for interconnects with multiple sources. *ACM Trans. on Design Automation of Electronics Systems*, 1996.
- [3] L. He, N. Chang, S. Lin, and O. S. Nakagawa. An efficient inductance modeling for on-chip interconnects. In *Proc. IEEE Custom Integrated Circuits Conference*, pages 457–460, May 1999.
- [4] L. He and K. M. Lepak. Simultaneous shield insertion and net ordering for capacitive and inductive coupling minimization. In *Proc. Int. Symp. on Physical Design*, 2000.
- [5] K. M. Lepak, I. Luwandi, and L. He. Simultaneous shield insertion and net ordering for coupled rlc nets under explicit noise constraint. In *Proc. Design Automation Conf*, pages 199–202, 2001.
- [6] J. D. Ma and L. He. Simultaneous signal and power routing under k_{eff} model. *The 3rd Intl. Workshop on System-Level Interconnect Prediction*, 2001.
- [7] J. D. Z. Ma and L. He. Formulae and applications of interconnect estimation considering shield insertion and net ordering. *Accepted and to appear in International Conference on Computer-Aided Design*, 2001.
- [8] A. E. Ruehli. Equivalent circuit models for three-dimensional multiconductor systems. *IEEE Trans. on MTT*, 1974.